

OUR MISSION:

We are committed to
building a healthier, safer,
and more just society.

**Corrections &
Community
Reentry
Programs**

Building Pathways
Toward Equity

TASC

Treatment Alternatives for Safe Communities

Reentry is more than returning to the community after incarceration. It's even more than having a job and a place to live. Reentry is having positive relationships and feeling worthy again—it's about having a second chance at dignity.

- Joel K. Johnson, TASC President & CEO

Reconnecting individuals with families and communities.

For individuals returning to Illinois communities following their release from prison, successful reintegration requires navigating a complex array of programs and public systems.

TASC understands the challenges that individuals face upon reentering society and creates pathways from incarceration to well-being in the community.

TASC's approach is to develop collaborative, systems-level responses that balance the supervisory needs of the parole system; the participation requirements in social support systems; and the needs of the individual, their family, and community. Service delivery plans are tailored to the unique needs and strengths of each individual, and also respond to broader goals of accountability, public safety, and the efficient use of public resources.

Restoring citizenship entails supporting and guiding formerly incarcerated individuals as they learn positive ways of thinking, living, and being. With TASC's case management and client advocacy, individuals learn to recognize and manage past traumas and triggers, address chronic health issues, practice problem-solving skills, and connect to resources that support their community reintegration. In this process, there is a healing of past harms, and reassurance to victims, families, and communities—and especially to individuals themselves—that change is possible.





TASC works in collaboration with the Illinois Department of Corrections to provide a range of services, including substance use disorder assessments and clinical reentry management. TASC also provides linkages to community-based substance use disorder treatment, mental health treatment, and other supportive services necessary to assist individuals in their transition back into their communities.

TASC guides clients as they work toward their goals, such as education, employment, housing, and other building blocks of successful reentry and stable recovery. TASC's services are designed to reduce recidivism, support recovery, encourage productive self-direction, and maintain long-term public safety.

They gave me hope, they gave me a reason to want to do better. They helped me stay off the streets.

- TASC client

1997	TASC begins reentry case management services for individuals leaving the Illinois Department of Corrections
2000	TASC begins providing brief drug screening and recommendations at Reception and Classification for every person sentenced to IDOC
2001	TASC establishes peer-led Winners' Circle recovery support groups for formerly incarcerated individuals
2003	TASC begins post-release wraparound services at the Westside Adult Transition Center.
2004	Sheridan Correctional Center is established as a dedicated treatment prison with case management provided by TASC
2006	Southwestern Illinois Correctional Center (SWICC) enhances drug treatment/reentry program with specialized methamphetamine treatment unit, and TASC pre- and post-release case management
2012	TASC begins pre- and post-release services for Moms and Babies program at Decatur Correctional Center
2015	TASC leadership appointed to the Governor's Illinois State Commission on Criminal Justice and Sentencing Reform
2020	TASC expands telehealth treatment and case management; also launches Winners' Circle peer support online

RECEPTION & CLASSIFICATION

**21,000
ANNUALLY**

Every individual admitted to the Illinois Department of Corrections passes through one of four Reception & Classification Centers and is screened by TASC for substance use history.

These screens provide critical information about what clinical services men and women should receive in prison or at one of the specialized programs at Southwestern Illinois or Sheridan Correctional Centers.

WAITLIST / INREACH

**800
ANNUALLY**

TASC maintains a waitlist of individuals who may be eligible for specialized programs. TASC conducts inreach into their current institutions to encourage their participation.

This is the first time [I've] been clean this long. I am very grateful for TASC and its staff.

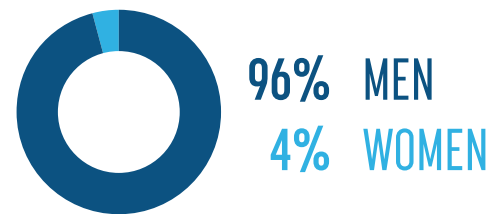
- TASC client

Specialized Case Management

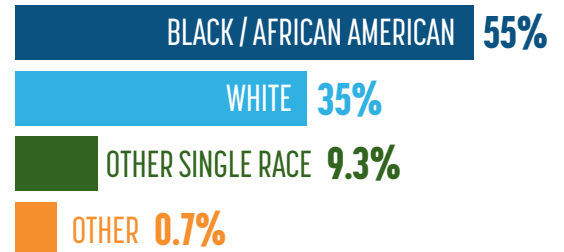
TASC provides specialized case management for an average of 5,800 men and women every year through its Corrections and Community Reentry programs.

**5,800
ANNUALLY**

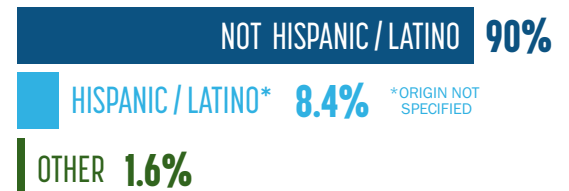
GENDER



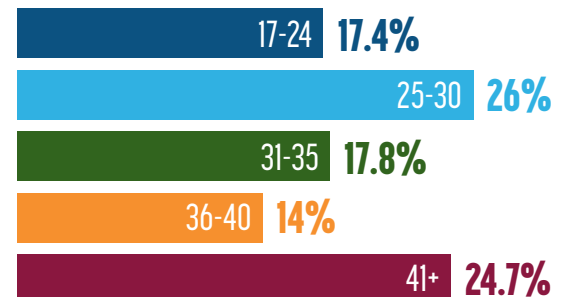
RACE



ETHNICITY



AGE



Demographics FY 2020

Individuals reached: Annual average, FY 2016-2020

Pre- & Post-Release Planning and Case Management

Under the leadership of the Illinois Department of Corrections, TASC provides reentry services for men and women leaving selected state correctional facilities. TASC's specialized case management focuses on building wellness and self-efficacy as individuals prepare to return to the community, with ongoing service placement and support after release.



Sheridan and Southwestern Illinois Correctional Centers

TASC provides comprehensive reentry planning and post-release services for men in the Sheridan and Southwestern Illinois Correctional Centers, which have dedicated programming for people with substance use disorders. Research shows that participants in these programs who completed substance use treatment and reentry support—including TASC case management—had a 44% lower likelihood of returning to prison within seven years than comparable releasees.



Westside Adult Transition Center (ATC)

TASC has partnered with the Safer Foundation at the Crossroads Adult Transition Center on Chicago's West Side to provide Wellness Recovery Action Planning (WRAP) services for individuals who indicate for substance use or other behavioral health needs. WRAP gives people choice in their treatment plan, encouraging self-management, and an individualized array of supports.



Specialized Programs for Women

The Females in Transition (FIT) program at Logan Correctional Center assists with navigating critical support upon release, including securing stable housing, understanding Illinois Department of Children and Family Services (DCFS) mandates and promoting reunification with their children, applying for public assistance, and engaging the necessary community supports.

The Moms and Babies program at Decatur Correctional Center allows pregnant mothers to keep their babies with them for a specific length of time. Like the FIT program, the Moms and Babies program assists with the transition back into the community and engagement of all necessary supports and services.



Virtual and In-Person Peer Support Groups

TASC supports the development of in-person and online peer-led support groups for people overcoming substance use disorders and past justice system involvement. Winners' Circles in the community, and Inner Circles within institutions, offer safe, positive, and non-judgmental spaces for participants to learn and practice life skills, and share support and encouragement with others at similar places in their lives.



TASC Specialized Case Management: A proven model.

Start planning **before release** so services and supports are aligned at the moment of reentry.

Align **individualized services** based on a comprehensive assessment of need.

Ensure a **“warm handoff”** direct to community providers so there are no gaps in intervention.

Community reentry after prison or jail is a process of navigating complex systems that at times are not built for providing second chances. It's a community of support that allows men and women to have access to resources, sometimes for the first time. **Reentry is a walk towards equity.**

- Millicent Lewis McCoy,
TASC Director of Corrections
and Community Reentry
Programs



Basic Needs

HOUSING: Two-thirds of individuals leaving prison report a temporary or unstable housing situation, including living with friends, staying at a halfway house or shelter, or having no stable living at all.

TASC's Corrections and Community Reentry programs have adopted a “housing first” approach to post-release services. Stable housing is the foundation for all attempts at recovery and productive citizenship, so is the preeminent consideration upon release.

FOOD ASSISTANCE: Similarly, two-thirds of post-release clients are referred for SNAP benefits and almost one-third explicitly state a need for food assistance.



Health

Virtually all of TASC post-release clients are connected to treatment for substance use disorders or co-occurring mental health conditions that require treatment and/or recovery support. TASC provides comprehensive clinical assessments and helps clients follow their individualized treatment plans, which may include medication for opioid use disorder.



Assist with navigating all system mandates and engagement of community supports.

Assist with all elements of restoration of citizenship to provide a foundation for success.

Acknowledge and address the need for long-term community-based recovery supports.



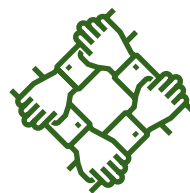
Employment

Almost 40% of individuals leaving prison report that employment is a priority. Employment is fundamental to individual and family stability, so TASC assists clients in accessing community resources for job-seeking and skill-building, to give them the best opportunity for success upon release.



Family Needs

About half of individuals leaving prison have children, and some may be involved in the child welfare system. TASC assists parents in reunification efforts, helping them navigate the complex requirements of the child welfare system and developing a plan that promotes the restoration of the family unit. TASC provides specialized supports for mothers, whose reentry circumstances may be highly unstable.



Recovery Support

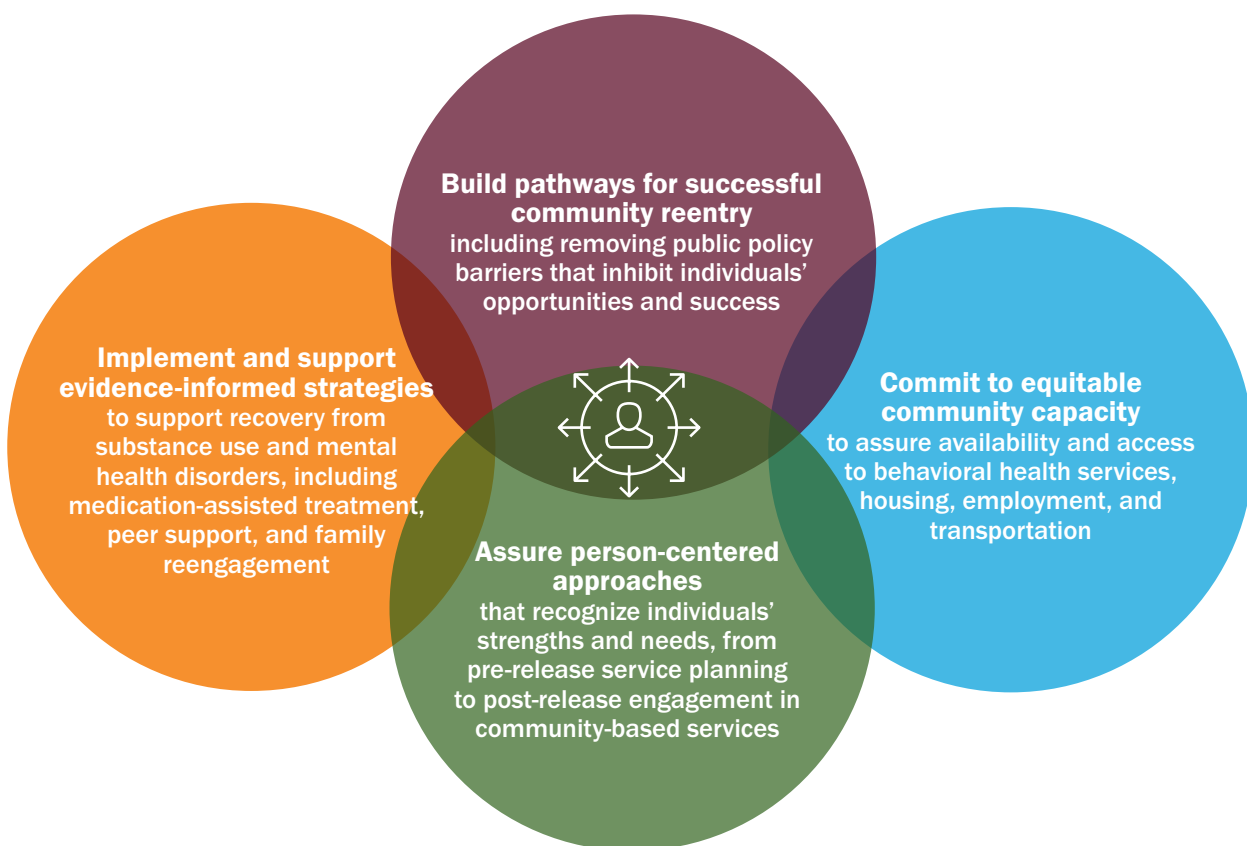
For people in early recovery from substance use disorders, peer support can be critical. This is especially so for individuals with past justice system involvement, who face added stigma and barriers to recovery.

Similar to the institution-based Inner Circle, the Winners' Circle program is a peer-led and peer-driven project that provides community-based support for participants (many of whom were formerly incarcerated) and their families. The Winners' Circle is designed to aid members in overcoming challenges often found in early recovery and reentry, such as obtaining identification cards, jobs, and housing, and to help them move toward full community involvement.



Rebuilding lives. Pursuing broad-scale solutions.

Through decades of providing reentry transition support for men and women across Illinois, TASC has identified key policies and practices that consistently prove vital to successful reentry.



When I came home I was worried a little because I didn't know where my help was going to come from. Within 72 hours I got a call from TASC. I am so grateful for the commitment that they put in to make sure I had everything I needed to start my life back up again. I didn't have to think about turning to the streets to support myself. **That life no longer exists for me anymore.**

- TASC Client

TASC advocates for people affected by substance use disorders, mental health conditions, and other barriers to health, employment, and family stability. We specialize in serving people in youth and family service systems, and in justice systems, including at pre-arrest, prosecution, court, jail, prison, probation, and parole.

Serving all 102 counties in Illinois, we offer assessment, care coordination, treatment, and specialized case management. Through direct services, public policy advocacy, and national and international consulting, we encourage initiatives that divert people away from government systems and into health and wellness in the community.

TASC
Treatment Alternatives for Safe Communities

Administrative Offices
700 S. Clinton St.
Chicago IL 60607
1 855 827 2444
www.tasc.org
www.centerforhealthandjustice.org